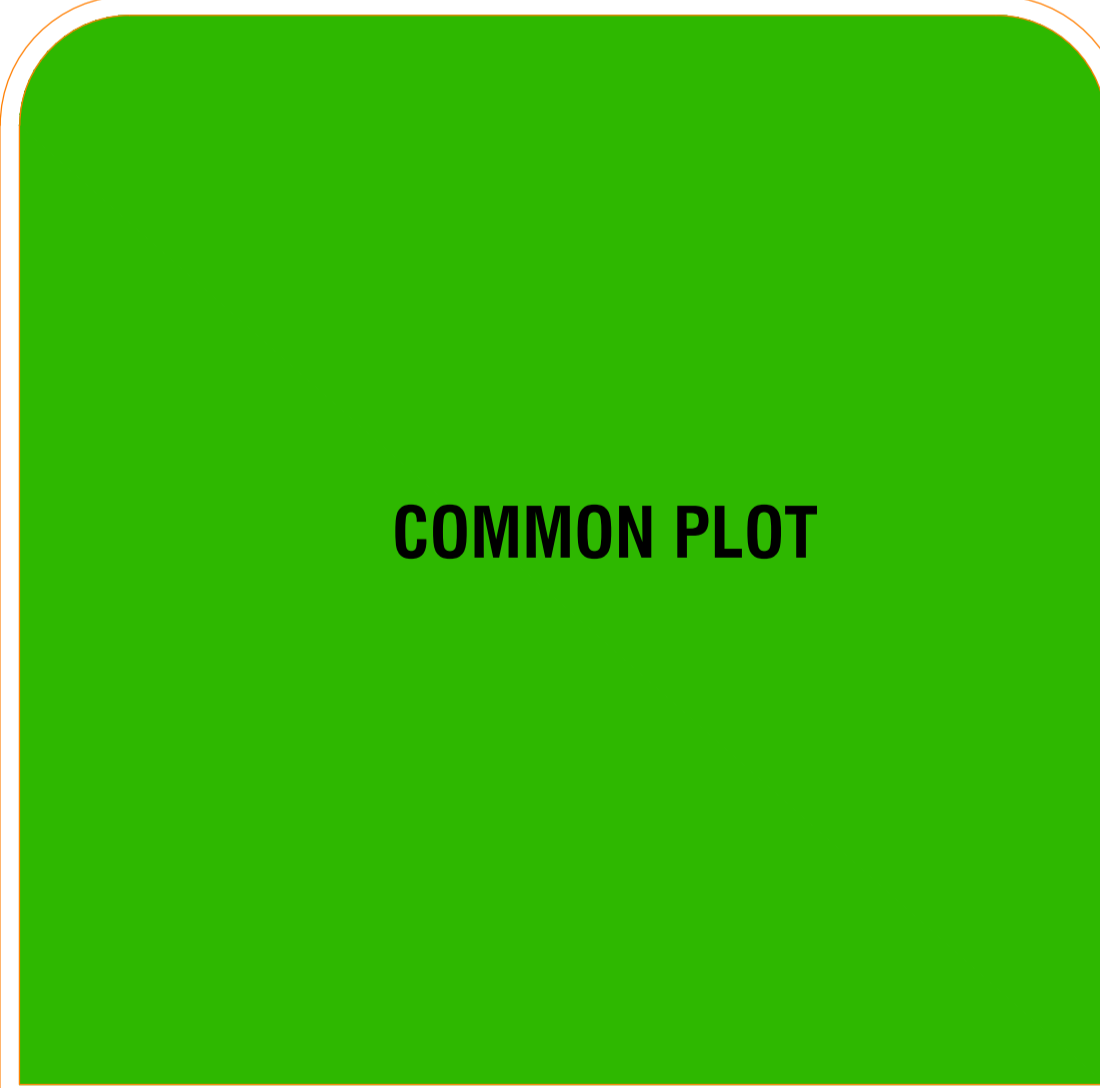
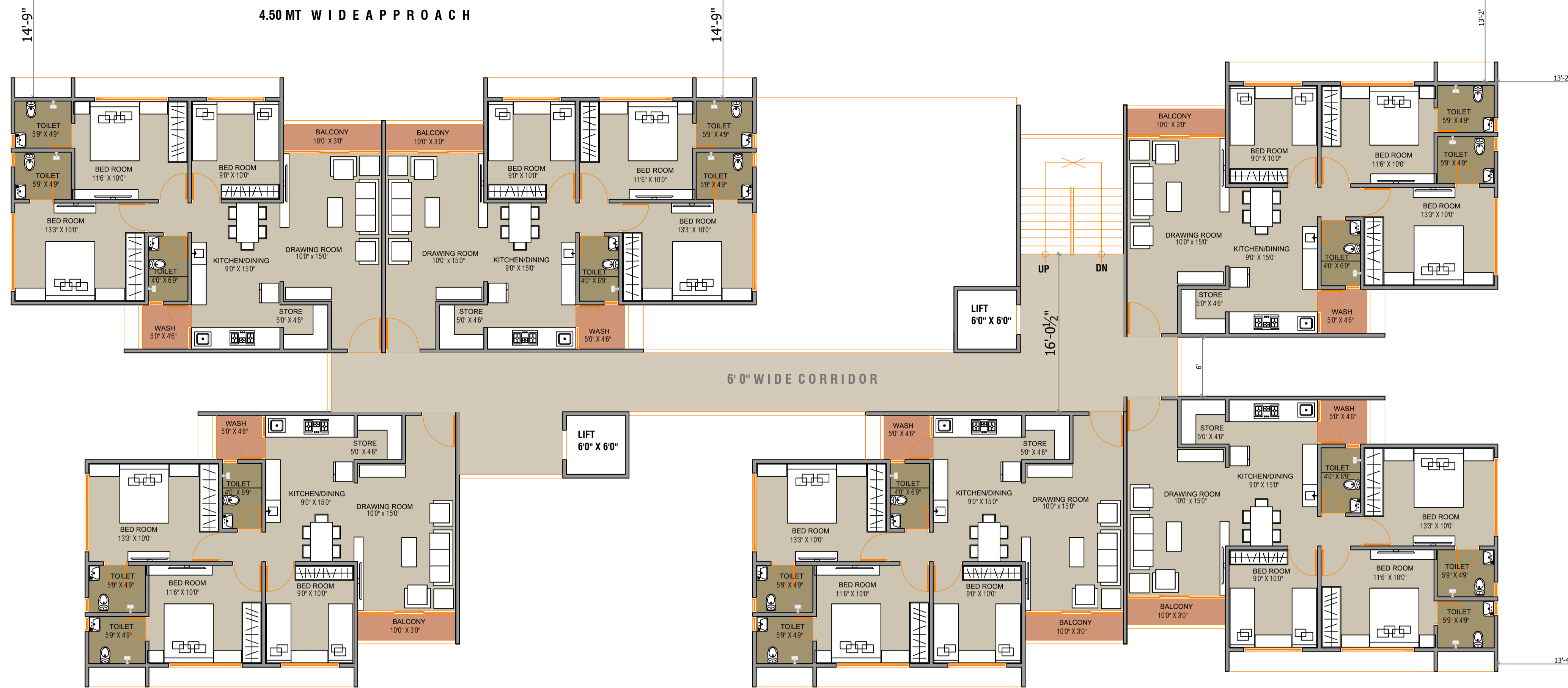




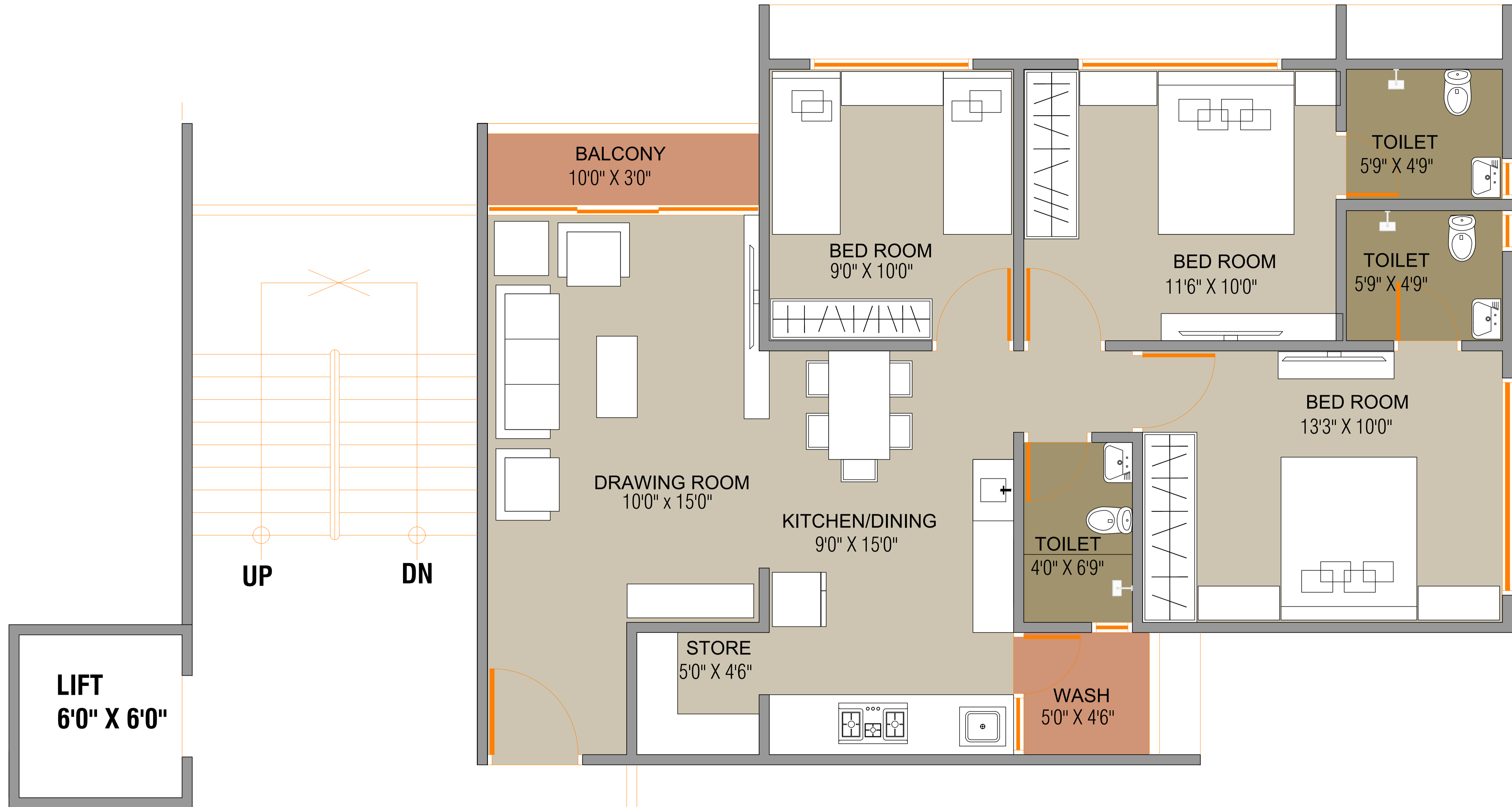
GARDEN PARADISE-2

12.00 MT T.P ROAD



12.00 MT T.P ROAD

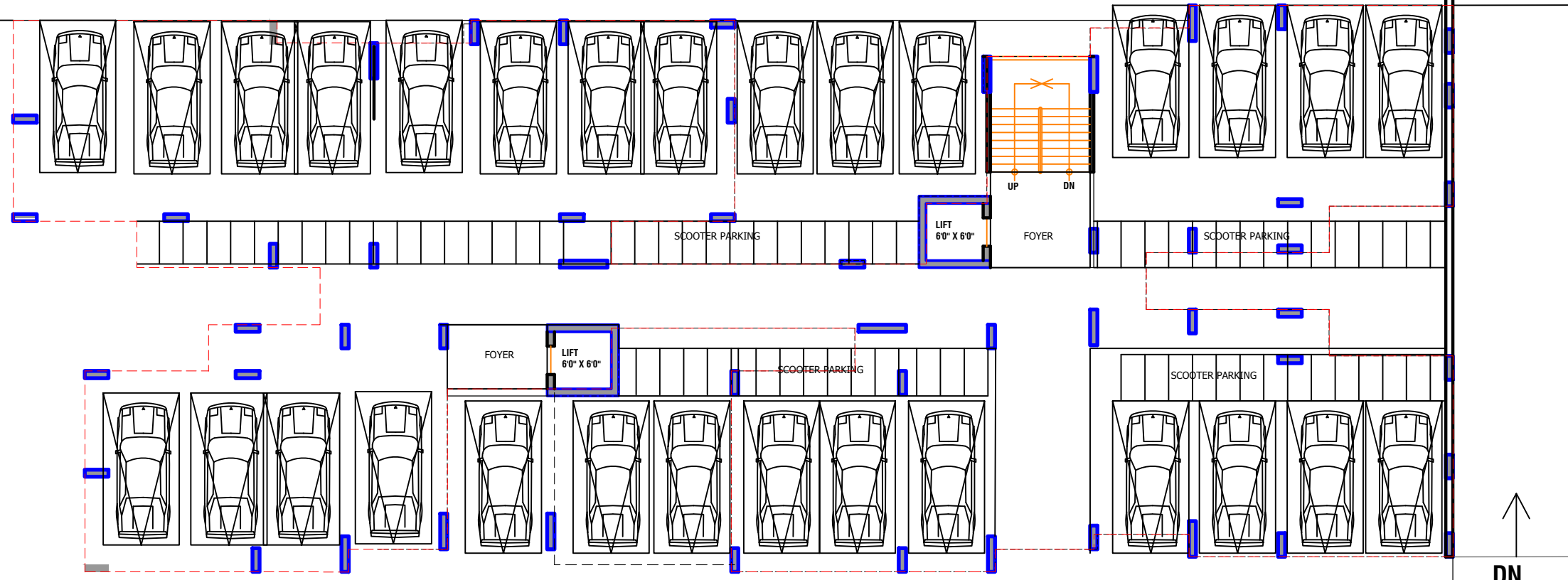
TYPICAL FLOOR PLAN
GARDEN PARADISE -2



UNIT PLAN
GARDEN PARADISE -2

12.00 MT T.P R O A D

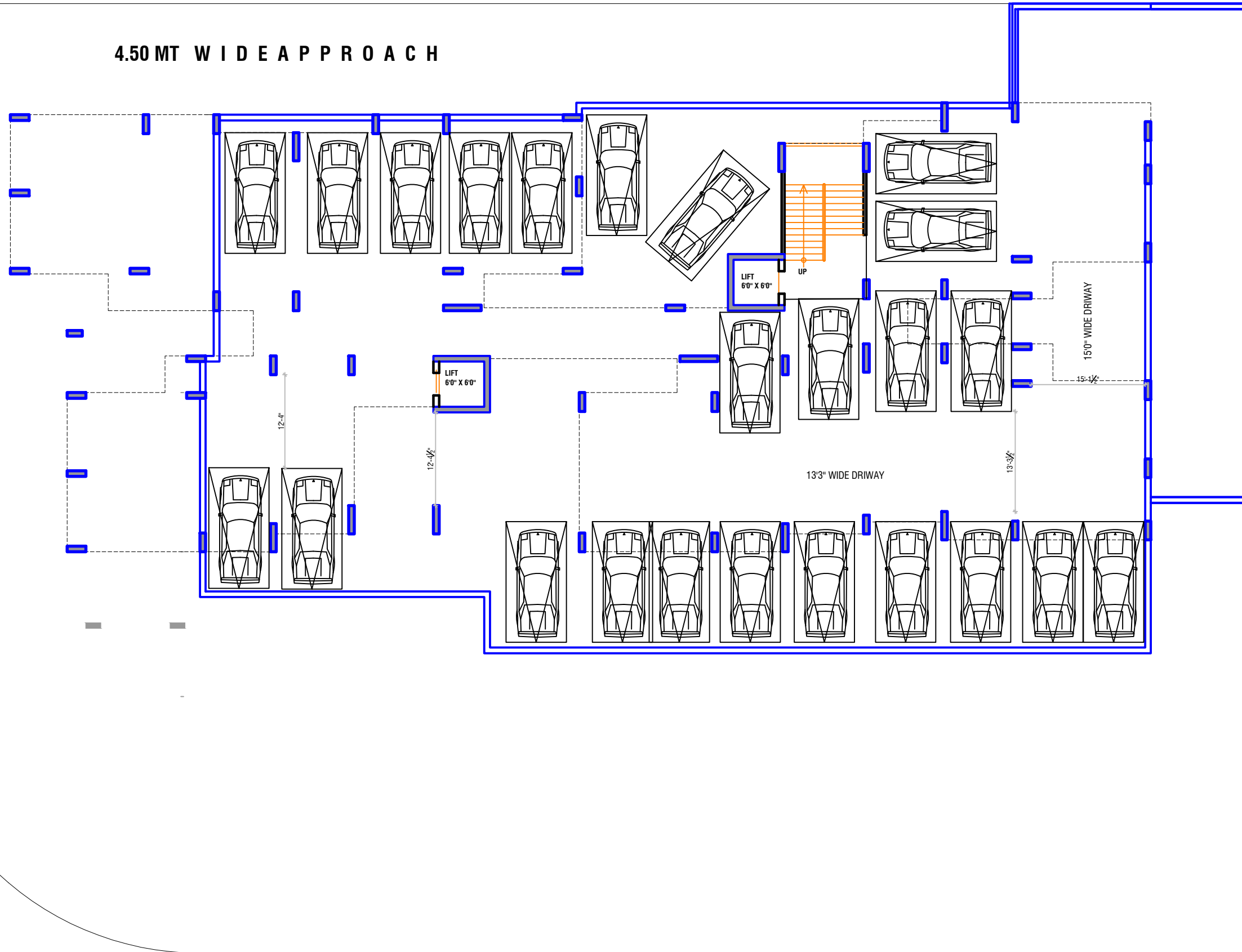
4.50 MT W I D E A P P R O A C H



12.00 MT T.P R O A D

4.50 MT W I D E A P P R O A C H

12.00 MT T.P R O A D



12.00 MT T.P R O A D

Structure

Earthquake resistant r.c.c frame structure with AAC Sandbase brick masonry wall.

Wall finish

Internal finish, single coat mala plaster with wall putty & external double coat plaster with texture and acrylic paint.

Flooring

Good quality vitrified tiles in entire apartment

Kitchen

Sandwich platform with granite top & s.s sink with designer tiles dado up to lintel level.

Toilet & plumbing

Glazed tiles dado up to lintel level & flooring, concealed plumbing with reputed sanitary ware & c.p. fitting

Door & window

Decorative main door with wooden frame. All other internal doors will be flush type with enable paint, fully glazed powder coated aluminum section sliding window with natural stone wall.

Electrification

Three phase concealed copper wiring with good quality accessories and sufficient electric points.

Terrace

Open terrace to be finished with china mosaic for heat reflection and water proofing.

Site Address:

Garden Paradise 2, Opp Neelkanth Villa Bunglows, Near DPS School, Nortgh Bopal, Ahmedabad.

Developed By: Satya Sai Developers

Designed By: Rajesh Darji